

REMOTE HOME MONITORING



Purrrmetrix is a remote monitoring system which will help the council to improve and adapt to changing performance requirements known as 'future homes standards.

Homes with monitoring will have a single plug in Carbon dioxide (CO2) monitor, similar to a plug-in diffuser. Please keep the unit plugged in and switched on.



Carbon dioxide levels are monitored to give an indication of indoor air quality. Low levels are linked to clean, fresh air and improved health.

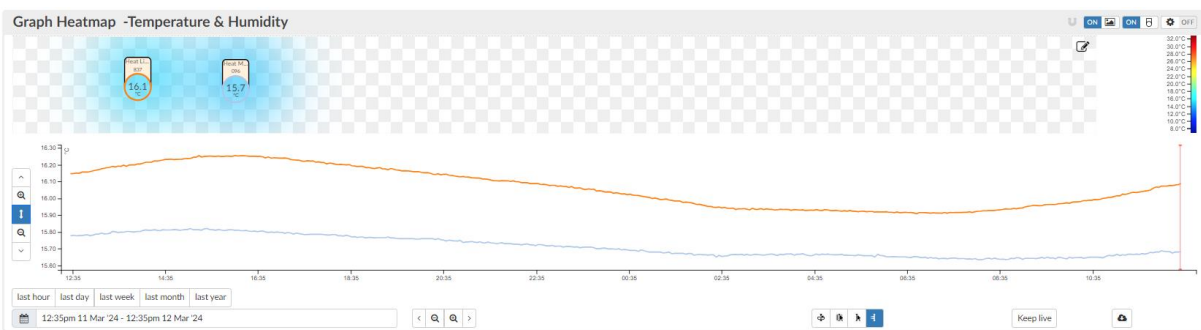
Two temperature and humidity sensors are located in the main bedroom and living area. These small sensors are stuck onto walls away from direct sunlight. They record temperatures including excess cold and overheating. Humidity is the cause of damp and mould which can lead to poor health and property damage.

These monitors have a built-in sim card. They will not use your wifi.

Results are collected every 30 minutes and stored on a cloud-based portal which will allow the council to record simple readings which build a picture of building health.

After 12 months, a full summer and winter. The council will remove the sensors.

To view the data collected contact sophie.tuffin@nfdc.gov.uk.



Example of temperature & humidity recordings.